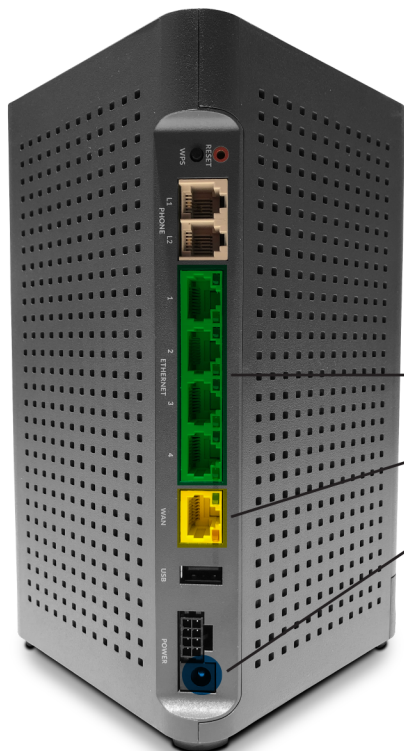


GigaSpire BLAST U6 Set-up Guide



***For This Process
You Will Need:***



GigaSpire Blast U6

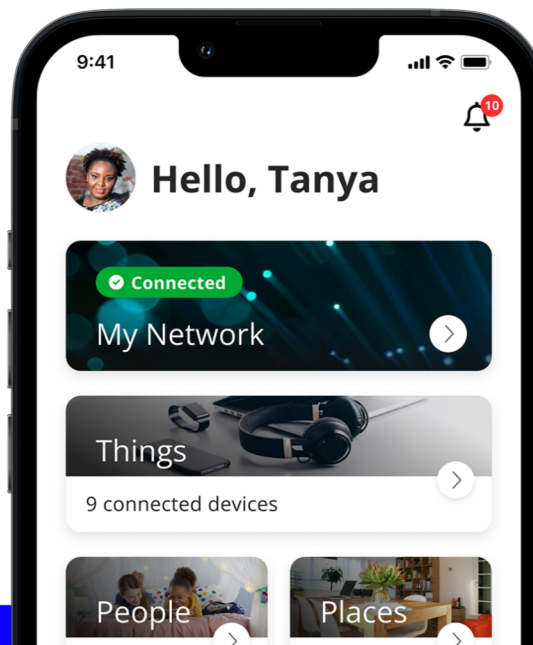
Ethernet Ports

Wan Port

Power

Power Cord and Ethernet Cable(s)

**Smartphone (Android or Apple) with
CommandIQ app installed (See page
7.)**



Before You Begin

Thank you for participating in the upgrade program. This installation document will guide you through the setup of your new router.

Please call one of our friendly support experts, and we will walk you through this process. It should only take about 15 minutes.

Step 1: Locate Your Current Router



1a: This will be the location for your new router, which is already optimally situated in your home. A Customer Service Representative will begin the upgrade process by resetting your current router.

1b: When directed by your Customer Service Representative, remove the power cord only from your current router and unplug it from the wall socket. Do not unplug any other cables at this time.

Step 2: Unpack Your New Gigaspire

2a: Position the new router in the location of your current one.

2b: Locate the new power adapter in the box, and insert the cord into your new router.

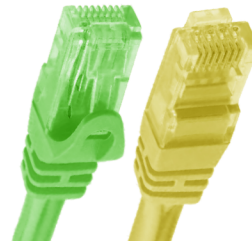
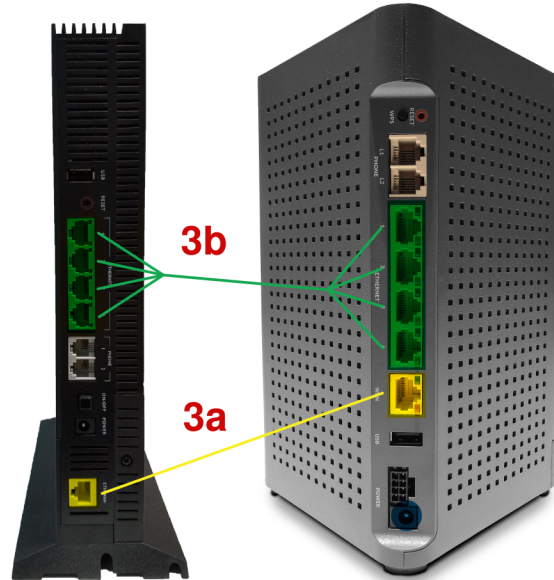
2c: Plug in the new power adapter into the wall socket.



Step 3: Connect the Cables

3a: Locate the WAN port on your existing router. You will now disconnect that cable and move it to the new router WAN port.

3b: Repeat the same process for any Ethernet cables on your current router and move them to the same ports on your new router.



3c: After approximately 10 minutes, a solid blue light will indicate a successful boot-up. You are now ready for setup.

- If the color does not change from solid red to a solid blue, verify that the WAN cable is connected to the correct port.



Step 4: Set Up the App

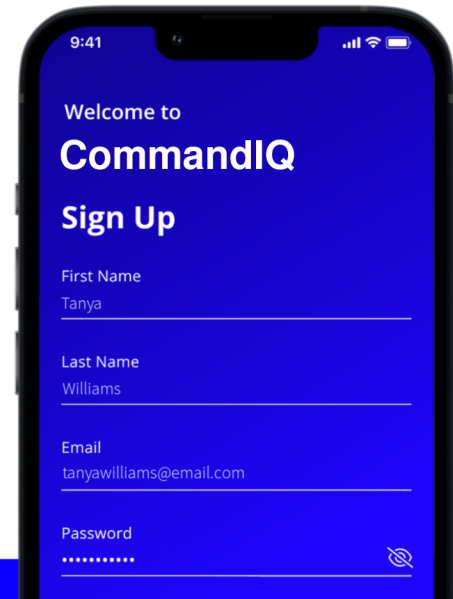
Check your phone or another device to ensure it has successfully connected to WiFi before proceeding.

Download the CommandIQ WiFi app from the Apple or Google Play store.

Once you download the app, follow the prompts to create an account and login.

After creating an account, please scan the QR code located on the bottom of your GigaSpire or the side of the box it came in (CLEI) to onboard the new router.(If you have trouble with the QR code, you can enter the details manually).

The CSR on the phone will assist you with the setup of the app.





Congratulations! You are now ready to use your new router.

Make the most of your new router by creating a guest network, people profiles, running a bandwidth test, and more.